



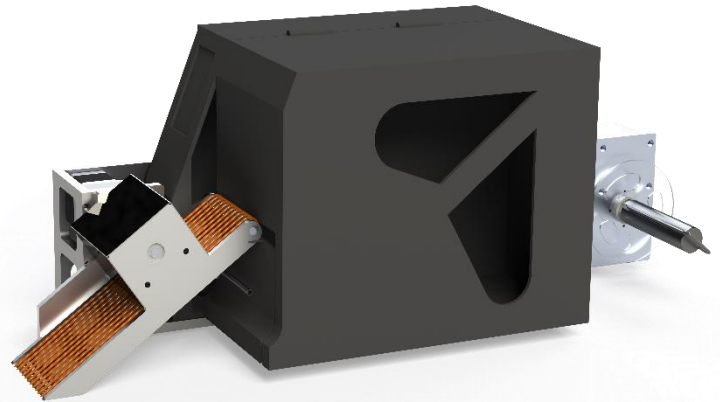
Print & Apply Labeler

## Belt Applicator

The QKE Belt applicator effortlessly affixes labels with remarkable velocity and accuracy, whether it be from above, below, or the side. Utilizing a vacuum belt, the label seamlessly travels from the printer to the intended product.

The capacity of the QKE belt applicator is determined by the label size, allowing for high-speed product labeling. Its compact size and precise labeling capability make it an ideal choice for below labeling applications.

The QKE Global implements a fully automated marking system for labeling packs of sliced cheese on both the top and bottom surfaces. With a total capacity of high speed per minute, the two parallel lines efficiently handle the task. The system is equipped with either a completely electrical or vacuum belt, enabling uninterrupted production even during label changes.



### Advantage of Uptime

- Enhance efficiency of maintenance workforce through the elimination of commonly worn-out and adjusted components
- Equipped with standard integrated sensors for pack/case detection and applicator home/extension
- Label feed is precisely managed by Intelligent Sensor, without the need for clutches or nip roller.

### Enhanced productivity features

- Achieve optimal print quality and extend printhead lifespan through automatic regulation of printhead pressure
- Improve overall equipment effectiveness (OEE) and monitor performance through on-screen diagnostic tools
- Available in 53mm and 107mm printhead versions to ensure superior performance on various label sizes

### Assurance of Coding

- With the incorporation of Code Assurance software features, the occurrence of operator errors is greatly reduced, thereby guaranteeing accurate coding of products.
- Streamlining the process, the on-board label database minimizes the need for operator intervention, ensuring precise job selection.
- By linking data from various text fields, the creation of bar codes is automated, eliminating the need for manual input by operators.

### Enhanced user-friendliness

- Achieve label and ribbon modifications effortlessly within a minute by following the most straightforward online procedure
- Efficiently review progress and opt for tasks using a user-friendly interface, resulting in simplified operation
- Seamlessly reach applicator and air-pipe through pivot mechanism (no tools required) to facilitate printhead upkeep and cleansing

# Belt Applicator

## Application method

Electrial/ Vacuum belt

## Print technology

Thermal Transfer | Direct Thermal

Print head: 4-inch | 6-inch | 8-inch

## Print resolution

203 DPI | 300 DPI | 600 DPI

## Print speed

Up to 16 ips (406 mm/s)

## Throughput

Up to 90 packs per minute (depending on label size)

Recommended max conveyor speed 98.4ft/min (30m/min)

## Ribbon specification

Standard Ribbon: 110mm x 300m, 168mm x300m, 220mm x 300m

(Up to 450m)

## Label specification

Label Width: 30mm to 220mm

Label Length: 30mm to 220mm

Capacity: Up to 450mm spool diameter (typically delivers over 9000 typical GS1 bar code labels per roll)

## Tamp sizes

Following label size require from customers

## Print capabilities

Full downloadable font support using TrueType® fonts (including multiple languages and Unicode support); fixed, variable and merged text fields; flexible date/time formats; flexible shift code formats; auto best before date calculations and concession management; calendar rules; auto incrementing decrementing text, counters and bar codes; multiple graphic formats supported (up to maximum print area); link fields to databases; scalable text and text blocks

## Connectivity

Ethernet, Power-over-Ethernet, RS232, Configurable I/O (24V, PNP and volt free)

USB (for backup/restore and label upload)

## Bar codes supported

**1-D Barcodes** : China Postal Code, Codabar, Code 11, Code 32, Code 39, Code 93, Code 128 (subset A, B, C), EAN-8/EAN-13 (with 2 & 5 digits extension), EAN 128, FIM, German Post Code, GS1 DataBar, HIBC, Industrial 2 of 5, Interleaved 2-of-5 (I 2 of 5), Interleaved 2-of-5 with Shipping Bearer Bars, ISBT-128, ITF 14, Japanese Postnet, Logmars, MSI, Postnet, Plessey, Planet 11 & 13 digit, RPS 128, Standard 2 of 5, Telepen, Matrix 2 of 5, UPC-A/UPC-E (with 2 or 5 digit extension), UCC/EAN-128 K-Mart, Random Weight and Pharmacode

**2-D Barcodes** : Aztec code, Code 49, Codablock F, Datamatrix code, MaxiCode, Micro PDF417, Micro QR code, PDF417, QR Code, TLC 39, GS1 Composite, DotCode, Marco PDF 417

## Communications protocols

EZPL, GEPL, GZPL, GDPL auto switch

## Air supply

6 bar, clean and dry

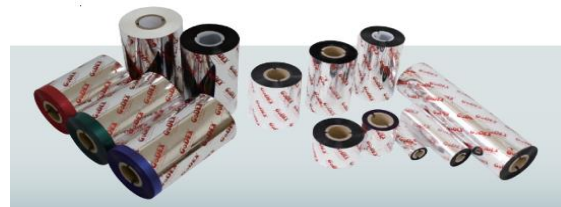
## Power consumption

110/240 VAC, 50/60 Hz

## Operating environment

Temperature Range: 41-104°F (5-40°C)

Humidity: 20-85% Relative, non-condensing



**New quote: +84 (0)838.03.06.09**

Call **+84-838-03-06-09**

Email **sales@qke.vn**

or visit **www.qke.vn/en/**

## **QKE© Global**

4<sup>th</sup> Floor Dong Nam Building, 322 Tay Thanh, Tay Thanh Ward,  
Tan Phu District, Ho Chi Minh City, Vietnam

©2023 QKE Global — All rights reserved.

QKE Global's policy is one of continued product improvement. We reserve the right to alter design and/or specifications without notice.

