



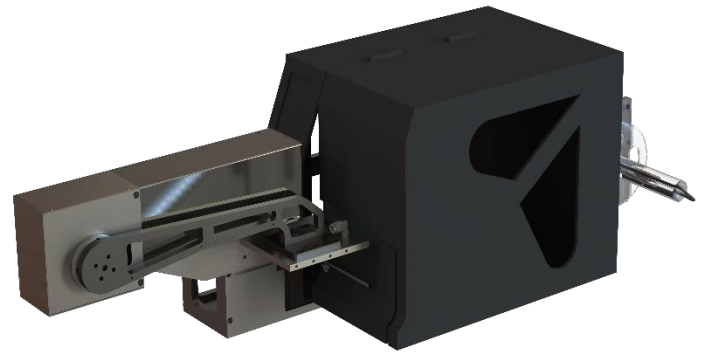
Print & Apply Labeler

Swing Arm Applicator

The high-speed QKE rotary arm applicator is specifically engineered to swiftly apply labels either on adjacent sides of a box or on the front, side, top, or back individually. Additionally, it is exceptionally suitable for corner wrap applications.

The user can rely on the exclusive tactile arm to identify not just the item to be labeled accurately, but also any potential obstructions along its path, ensuring complete safety. Additionally, this feature facilitates quick and accurate labeling of even delicate products, whether on their adjacent sides or when wrapping around corners. The rotational motion aligns with the printing direction, enabling the application of labels longer than 300 mm onto the product.

The angle at which the arm and applicator plate hold the label securely using vacuum can be adjusted within a range of several degrees to a maximum of 200 degrees.



Advantage of Uptime

- Enhance efficiency of maintenance workforce through the elimination of commonly worn-out and adjusted components
- Equipped with standard integrated sensors for pack/case detection and applicator home/extension
- Label feed is precisely managed by Intelligent Sensor, without the need for clutches or nip roller.

Enhanced productivity features

- Achieve optimal print quality and extend printhead lifespan through automatic regulation of printhead pressure
- Improve overall equipment effectiveness (OEE) and monitor performance through on-screen diagnostic tools
- Available in 53mm and 107mm printhead versions to ensure superior performance on various label sizes

Assurance of Coding

- With the incorporation of Code Assurance software features, the occurrence of operator errors is greatly reduced, thereby guaranteeing accurate coding of products.
- Streamlining the process, the on-board label database minimizes the need for operator intervention, ensuring precise job selection.
- By linking data from various text fields, the creation of bar codes is automated, eliminating the need for manual input by operators.

Enhanced user-friendliness

- Achieve label and ribbon modifications effortlessly within a minute by following the most straightforward online procedure
- Efficiently review progress and opt for tasks using a user-friendly interface, resulting in simplified operation
- Seamlessly reach applicator and air-pipe through pivot mechanism (no tools required) to facilitate printhead upkeep and cleansing

Swing Arm Applicator

Application method

Electrial/ Vacuum Rotary Arm

Print technology

Thermal Transfer | Direct Thermal

Print head: 4-inch | 6-inch | 8-inch

Print resolution

203 DPI | 300 DPI | 600 DPI

Print speed

Up to 16 ips (406 mm/s)

Throughput

Up to 60 packs per minute (depending on label size)

Recommended max conveyor speed 98.4ft/min (30m/min)

Ribbon specification

Standard Ribbon: 110mm x 300m, 168mm x300m, 220mm x 300m
(Up to 450m)

Label specification

Label Width: 20mm to 220mm

Label Length: 20mm to 220mm

Capacity: Up to 450mm spool diameter (typically delivers over 9000 typical GS1 bar code labels per roll)

Tamp sizes

Following label size require from customers

Print capabilities

Full downloadable font support using TrueType® fonts (including multiple languages and Unicode support); fixed, variable and merged text fields; flexible date/time formats; flexible shift code formats; auto best before date calculations and concession management; calendar rules; auto incrementing decrementing text, counters and bar codes; multiple graphic formats supported (up to maximum print area); link fields to databases; scalable text and text blocks

Connectivity

Ethernet, Power-over-Ethernet, RS232, Configurable I/O (24V, PNP and volt free)

USB (for backup/restore and label upload)

Bar codes supported

1-D Barcodes : China Postal Code, Codabar, Code 11, Code 32, Code 39, Code 93, Code 128 (subset A, B, C), EAN-8/EAN-13 (with 2 & 5 digits extension), EAN 128, FIM, German Post Code, GS1 DataBar, HIBC, Industrial 2 of 5, Interleaved 2-of-5 (I 2 of 5), Interleaved 2-of-5 with Shipping Bearer Bars, ISBT-128, ITF 14, Japanese Postnet, Logmars, MSI, Postnet, Plessey, Planet 11 & 13 digit, RPS 128, Standard 2 of 5, Telepen, Matrix 2 of 5, UPC-A/UPC-E (with 2 or 5 digit extension), UCC/EAN-128 K-Mart, Random Weight and Pharmacode

2-D Barcodes: Aztec code, Code 49, Codablock F, Datamatrix code, MaxiCode, Micro PDF417, Micro QR code, PDF417, QR Code, TLC 39, GS1 Composite, DotCode, Marco PDF 417

Communications protocols

EZPL, GEPL, GZPL, GDPL auto switch

Compressed Air

6 Bar. 90psi, uncontaminated

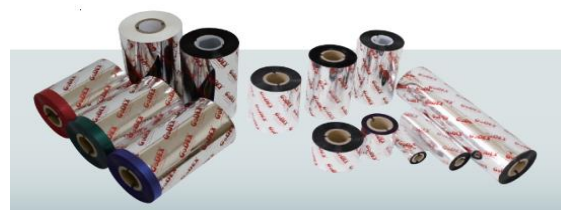
Power consumption

90-260 VAC (115W at 50 packs per minute)

Operating environment

Temperature Range: 41-104°F (5-40°C)

Humidity: 20-85% Relative, non-condensing



New quote: +84 (0)838.03.06.09

Call **+84-838-03-06-09**

Email **sales@qke.vn**

or visit **www.qke.vn/en/**

QKE© Global

4th Floor Dong Nam Building, 322 Tay Thanh, Tay Thanh Ward,
Tan Phu District, Ho Chi Minh City, Vietnam

©2023 QKE Global — All rights reserved.

QKE Global's policy is one of continued product improvement. We reserve the right to alter design and/or specifications without notice.

