



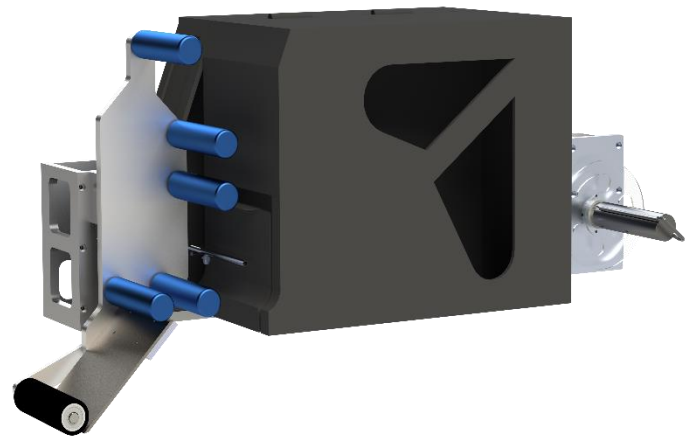
Print & Apply Labeler

Roller Applicator

This system is designed specifically for batch labelling purposes. When products are being conveyed, the roll-on applicator head labels both the top and right side of each item. In order for this process to be effective, it is essential that the width and height of all the products

The adjustable diverter pulleys and ventilator unit are specifically designed to accommodate different label sizes. One of the main benefits of having the ventilator unit is that it eliminates the need for synchronizing the printer and the conveyor belt. Furthermore, the ventilator's capacity can be tailored to match the precise weight, length, and user-friendly "memory effect" of the labels being utilized.

The components listed under the "accessories" section encompass everything required to fully assemble a system that is readily deployable and user-friendly.



Advantage of Uptime

- Enhance efficiency of maintenance workforce through the elimination of commonly worn-out and adjusted components
- Equipped with standard integrated sensors for pack/case detection and applicator home/extension
- Label feed is precisely managed by Intelligent Sensor, without the need for clutches or nip roller.

Enhanced productivity features

- Achieve optimal print quality and extend printhead lifespan through automatic regulation of printhead pressure
- Improve overall equipment effectiveness (OEE) and monitor performance through on-screen diagnostic tools
- Available in 53mm and 107mm printhead versions to ensure superior performance on various label sizes

Assurance of Coding

- With the incorporation of Code Assurance software features, the occurrence of operator errors is greatly reduced, thereby guaranteeing accurate coding of products.
- Streamlining the process, the on-board label database minimizes the need for operator intervention, ensuring precise job selection.
- By linking data from various text fields, the creation of bar codes is automated, eliminating the need for manual input by operators.

Enhanced user-friendliness

- Achieve label and ribbon modifications effortlessly within a minute by following the most straightforward online procedure
- Efficiently review progress and opt for tasks using a user-friendly interface, resulting in simplified operation
- Seamlessly reach applicator and air-pipe through pivot mechanism (no tools required) to facilitate printhead upkeep and cleansing

Roller Applicator

Application method

Industrial Roller system

Print technology

Thermal Transfer | Direct Thermal

Print head: 4-inch | 6-inch | 8-inch

Print resolution

203 DPI | 300 DPI | 600 DPI

Print speed

Up to 16 ips (406 mm/s)

Throughput

Up to 90 packs per minute (depending on label size)

Recommended max conveyor speed 98.4ft/min (30m/min)

Ribbon specification

Standard Ribbon: 110mm x 300m, 168mm x300m, 220mm x 300m
(Up to 450m)

Label specification

Label Width: 10mm to 220mm

Label Length: 10mm to 220mm

Capacity: Up to 450mm spool diameter (typically delivers over 9000 typical GS1 bar code labels per roll)

Tamp sizes

Following label size require from customers

Print capabilities

Full downloadable font support using TrueType® fonts (including multiple languages and Unicode support); fixed, variable and merged text fields; flexible date/time formats; flexible shift code formats; auto best before date calculations and concession management; calendar rules; auto incrementing decrementing text, counters and bar codes; multiple graphic formats supported (up to maximum print area); link fields to databases; scalable text and text blocks

Connectivity

Ethernet, Power-over-Ethernet, RS232, Configurable I/O (24V, PNP and volt free)

USB (for backup/restore and label upload)

Bar codes supported

1-D Barcodes : China Postal Code, Codabar, Code 11, Code 32, Code 39, Code 93, Code 128 (subset A, B, C), EAN-8/EAN-13 (with 2 & 5 digits extension), EAN 128, FIM, German Post Code, GS1 DataBar, HIBC, Industrial 2 of 5, Interleaved 2-of-5 (I 2 of 5), Interleaved 2-of-5 with Shipping Bearer Bars, ISBT-128, ITF 14, Japanese Postnet, Logmars, MSI, Postnet, Plessey, Planet 11 & 13 digit, RPS 128, Standard 2 of 5, Telepen, Matrix 2 of 5, UPC-A/UPC-E (with 2 or 5 digit extension), UCC/EAN-128 K-Mart, Random Weight and Pharmacode

2-D Barcodes : Aztec code, Code 49, Codablock F, Datamatrix code, MaxiCode, Micro PDF417, Micro QR code, PDF417, QR Code, TLC 39, GS1 Composite, DotCode, Marco PDF 417

Communications protocols

EZPL, GEPL, GZPL, GDPL auto switch

Pinch Roller

Foam rubber, vertically and horizontally adjustable

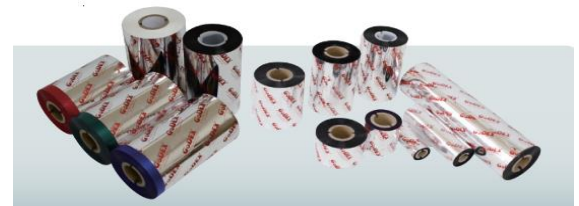
Power consumption

90-260VAC (115W at 50 packs per minute)

Operating environment

Temperature Range: 41-104°F (5-40°C)

Humidity: 20-85% Relative, non-condensing



New quote: +84 (0)838.03.06.09

Call **+84-838-03-06-09**

Email **sales@qke.vn**

or visit **www.qke.vn/en/**

QKE© Global

4th Floor Dong Nam Building, 322 Tay Thanh, Tay Thanh Ward,
Tan Phu District, Ho Chi Minh City, Vietnam

©2023 QKE Global — All rights reserved.

QKE Global's policy is one of continued product improvement. We reserve the right to alter design and/or specifications without notice.

